

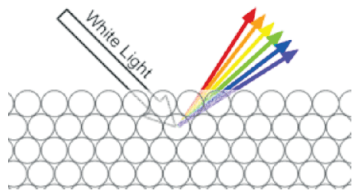
Value & Buying

Valuation and Buying Boulder Opal can be based on the following:

Base / Body Tone – The body tone of an opal is different to the play-of-colour displayed by precious opal. Body tone refers to the relative darkness or lightness of the opal, while ignoring its play-of-colour. This is assessed on a Scale of Body Tone

Brightness & Colour - Play of colour or fire is the changes of colour when the stone is rotated. The more play/fire the more valuable. Red being the most highly prized is the rarest.

Pattern - A combination of play of colour with a pattern or a distinct pattern such as Harlequin, Rolling Flash, Straw, Chinese writing and others can increase the value considerably.



Enhance your Opal Experience

Visit Winton and experience;

- Visit one of the several opal shops in Winton's main street to find the special item.
- Attend the annual opal festival in July each year to enjoy the festivities, meet the miners, buy some rough or cut stones,
- Enter the "Queen of Gems" International Jewellery Design Awards competition.
- Visit Opalton, once the historical home to a thriving mining community. Camp at the Bush Park which offers great facilities, and enjoy the company of mines and other opal buffs. Or purchase a fossicking permit and find your very own piece of opal.

Queensland Boulder Opal Association

The Queensland Boulder Opal Association Inc. is an industry body that represents Opal Miners and members.

A committee of local miners founded the Queensland Boulder Opal Association in Winton in 1992.

The Queensland Boulder Opal Association's main functions are to;

- Ensure that Legislative and Regulatory bodies controlling the industry have appropriate policies that are suitable to the needs of the industry, and,
- Promote this rare, unique product, Queensland's Boulder Opal
- Organise the Winton Opal Festival and "Queen of Gems" International Jewellery Design Awards

Queensland Boulder Opal Association Inc.

Contact:

PO Box 334
Winton QLD 4735

Email Address: qboa@bigpond.com

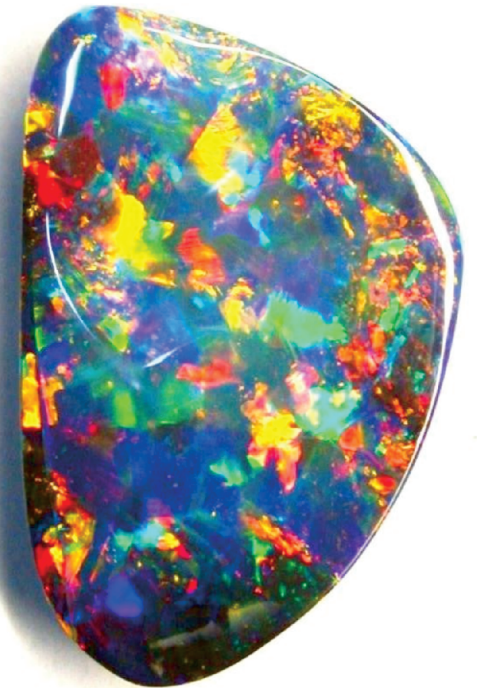
Website: www.qboa.com.au



Opal found in

Queensland

QUEENSLAND
BOULDER
OPAL



QUEENSLAND BOULDER OPAL ASSOCIATION
WINTON, QUEENSLAND, AUSTRALIA

Boulder Opal

Australia has the finest opals in the world!

What is Boulder Opal

Boulder Opals are only found in Queensland Australia.



The opal generally forms in thin veins within a host rock of ironstone or sandstone known as boulders varying in shapes, sizes, and colours.

Boulder opal is primarily cut with host rock as a base. This provides a durability and strength unlike other opals. There are some other commonly used variants within Queensland boulder opal such as boulder matrix opal, which is where the opal is intimately diffused as infillings of pores or holes between grains of the host rock in which it was formed. Boulder matrix opal is found in Queensland and can be distinguished by the ironstone host rock.

Although boulder opal has an ironstone backing, it is regarded as a solid natural opal because this backing occurs naturally. The variety of natural opal is determined by the two characteristics of body tone and transparency.

The popularity of this type of opal has soared since the mid-1970s. Boulder opals are invariably cut incorporating the host brown ironstone. They are in high demand and can be extremely valuable.

Queensland Boulder Opal

Boulder Opal – is a variety of precious opal that has the host rock forming naturally as part of the gem.



Boulder Matrix – is impregnated throughout smaller voids and grain size crevices within the boulders and, when cut, the host rock forms part of the face with the opal.



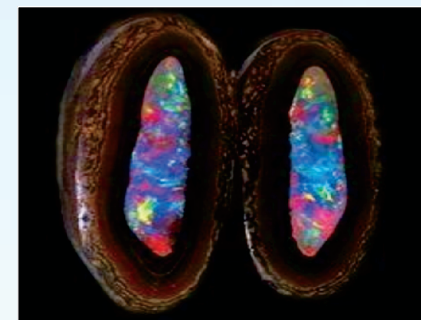
Wood Replacement Opal - Wood opal is a form of petrified wood which has developed an opalescent sheen or, more rarely, where the wood cellular structure has been completely replaced by opal.



Boulder Crystal / pipe - A unique pipe like structure occurring sometimes in sandstone and, when transparent and the colour clarity is sharp, it is often referred to as crystal pipe opal.



Yowah Nuts - A small spherical or ellipsoidal shape ironstone concretion that may contain either solid opal or opal matrix.



Ironstone Boulders - Open seams in ironstone boulders (pancakes) before processing.

